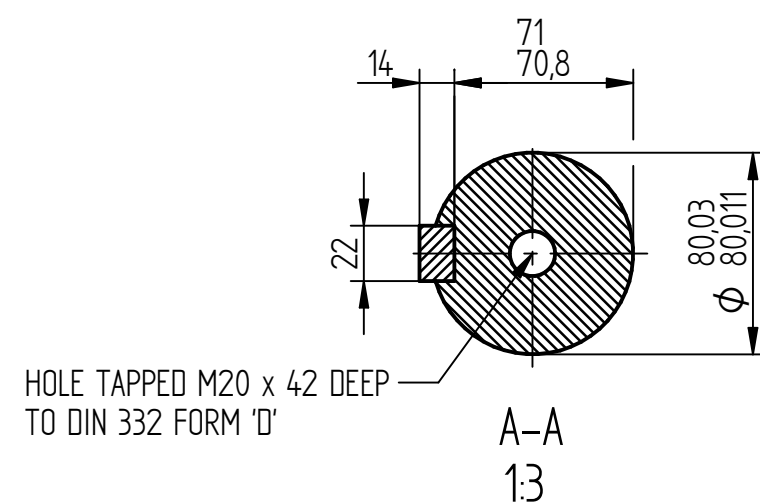
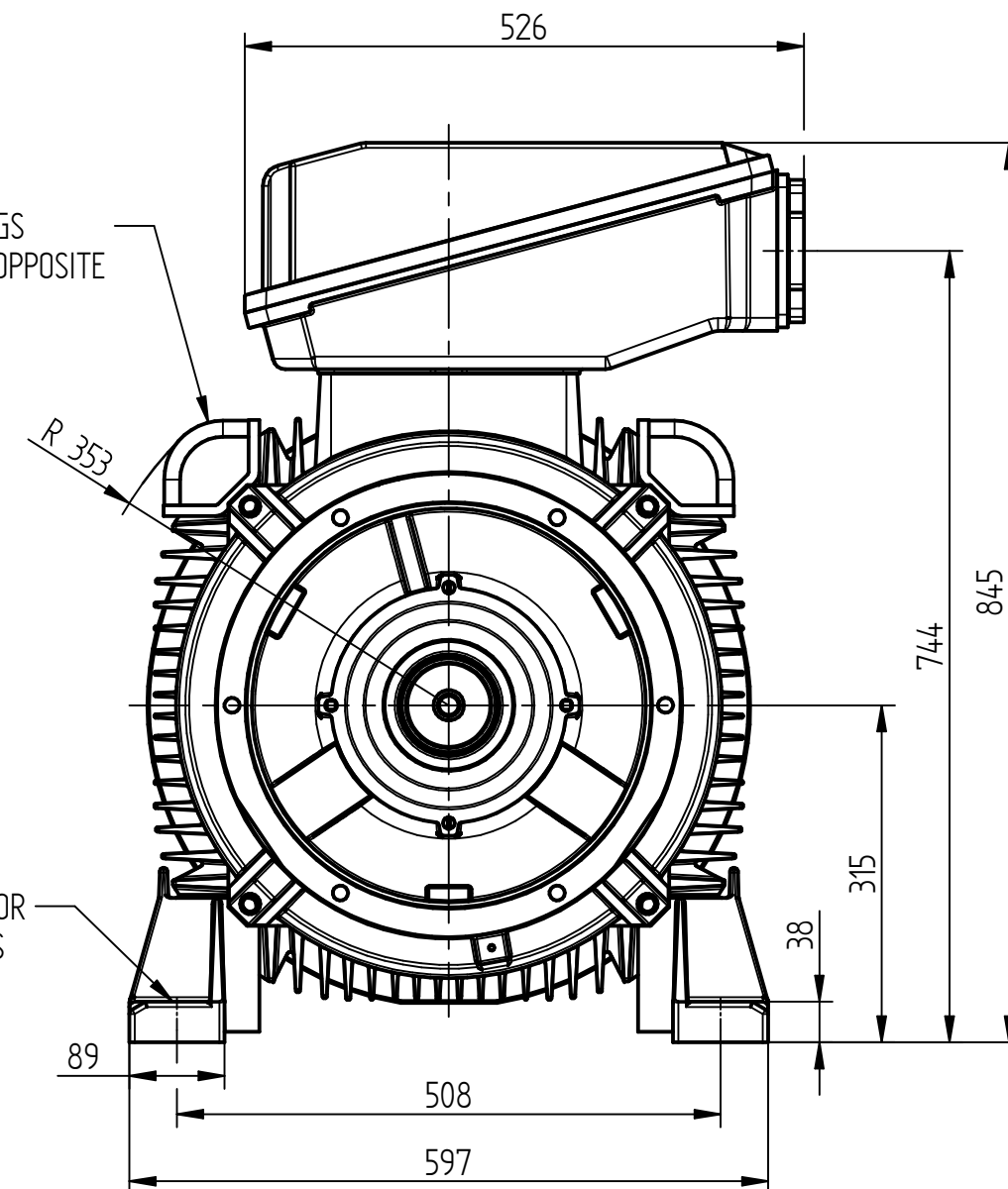


2 LIFTING LUGS
DIAGONALLY OPPOSITE



TERMINAL BOX POSITION:

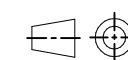
- CAN BE ARRANGED AT EITHER 9, 12 OR 3 O'CLOCK.
- STANDARD TERMINAL BOX POSITION IS 12 O'CLOCK AS SHOWN.

CONDUIT ENTRIES:

- TERMINAL BOX CAN BE ROTATED AT 90° INTERVALS.

ALL MOUNTING DIMENSIONS: ISO 2768-mK ACC TO EN 22768-1/2

ALL DIMENSIONS IN MILLIMETERS



FIRST ANGLE
PROJECTION

**BROOK
CROMPTON**

Produced by ATB Tamel S.A. a company of **ATB**
Technology in Motion

SHEET
SIZE

A3

TITLE:

OUTLINE DIMENSION DRAWING TOTALLY ENCLOSED FAN COOLED
WP-DF315ME 4P FRAME FOOT MOUNTED MOTOR

	NAME	DATE
DRAWN	SZ	25-06-19
CHECKED	PG	25-06-19
SCALE	1 : 7	

DRG. No. WP-DF315ME B3 4P

DRG. REF.

REVISION:

DATE: